



Print module **PX-Series** The Executive Class

Edition 6.2



Trained employees and specialists see to perfect quality.



Our labelling systems can be fit in seamlessly: for your process to run smoothly.



We offer a high level of individualization

We do not only deliver devices, but also parts of your processes.

Quality in the first place

With our progressive, first-class product labelling systems and devices we have established ourselves as a constant on the global market. Since 1975 our customers rely on high quality "Made in Germany".

cab goes global

Today we hold the position as an innovation leader. Like many of our customers we are based in Germany but act global. Seven subsidiaries and 350 professional distribution partners in more than 80 countries all over the world ensure cab to be close to her customers.

In-house production

In order to achieve highest quality we manufacture on our own production line in Sömmerda. We are accredited according to ISO 9001 and try to constantly strengthen our leading position.

Devices with system

Labelling technology is characterised in that it is needed almost everywhere, in changing environments, with other standards, with various process integrations.

For this reason we consequently pursue our fundamental idea of a system solution: all our devices go with the individual software as well as the labels, the ribbons, the connection to and the integration into your superior processes

respectively – a one-stop solution.

You see: we have much going for!

For 11 years now our entire product range is awarded with the Energy Star-seal. In addition to the positive effects on the electricity costs the reduced standby-mode saves – totalized for the entire product range – one tonne CO₂ day.



Innovative technology for better climate protection, energy-saving. Environmentally conscious.

Primary features



**Our ambitions are:
perfect function, high reliability, easy handling, low
deadlock and repair.**

The PX print and dispense module is especially designed for the fully automated printing in the industrial environment. The PX can be integrated in each print direction and solves every labelling application.

A warp resistant aluminium cast design form the basis for the mounting of all components of the print mechanism.

The food safe coating and stainless steel facing make the form and the functions perfect.

The installation of the device is mount-compatible to the devices of our competitors.

All modules are available either in left-hand or right-hand version with optional 200, 300 and 600 dpi print resolution. They can be

used for thermal transfer or thermal direct printing. A ribbon saver is also available.

During maintenance or repair parts or components can be changed easily.

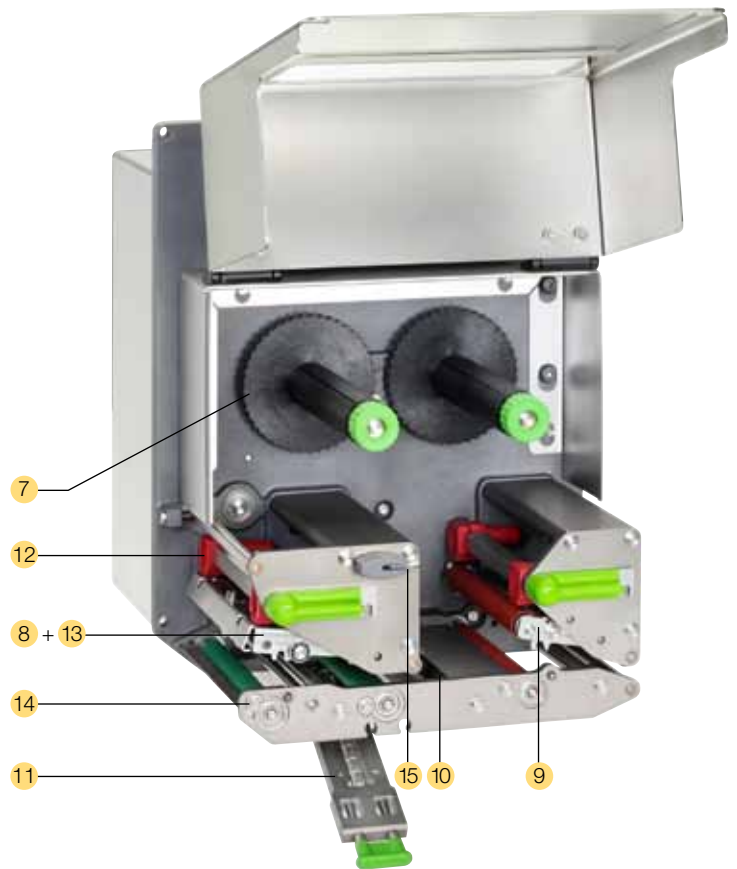
PX has all current interfaces such as RS 232, USB or Ethernet available. The digital integration interface meets highest demands.

The data preparation can be effected in real time due to the fast 32 Bit processor and the large RAM- and flash memory.

Printing without PC: in the stand-alone mode texts, graphics or printer specific adjustments can be printed from the internal memory or a memory card.

We assure system compatibility and make your decisions safe.

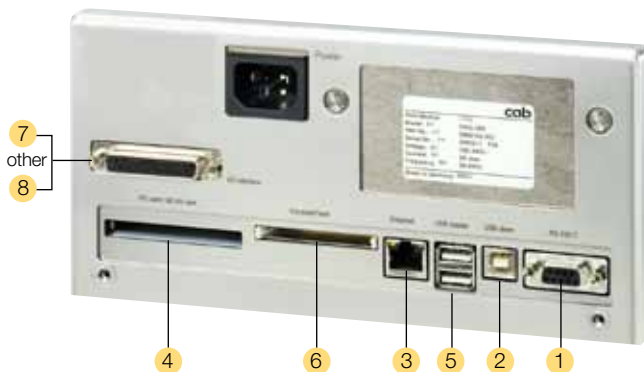
Perfection to the detail



Convincing product advantages

- 1 Big graphic display**
White backlight for optimal readability.
- 2 Navigator pad**
With illuminated lettering for an interactive menu navigation.
- 3 CF-memory card**
Slot for CF-memory card for storage of label formats, fonts, texts, graphics, programmes or data bases.
- 4 USB-Slot**
Additional USB-slot for service keys, keyboard, scanner or USB memory.
- 5 Power switch**
Attached to the front for better handling.
- 6 Solid metal cover**
It is made of dye-cast aluminium with antibacterial coating. All casings are made of stainless steel.
- 7 Ribbon rewinder and unwinder**
The three-part tightening axles allow a fast and easy ribbon exchange. Slender ribbons can be fixed in every position.
- 8 Ribbon saver**
It is used for labels which are to be printed partially. During label feed the printhead is lifted in the blank area and the ribbon is stopped.
- 9 Back-feed**
After dispensing the label the next one can be fed back behind the print line. Thus the label can be imprinted until the label edge and leaking of the liner during a longer pause is prevented.
- 10 Gap sensor**
With the see-through or reflective sensor the imprint on the label can be positioned precisely and the end of material can be detected – independent of the gaps.
- 11 Easy replacement of material**
The label material is inserted edgewise up to the end position. The printhead and the pressure roller are locked with locking levers.
- 12 Adjustment of the print layout**
By moving the plungers the pressure can be adjusted easily.
- 13 Fast printhead exchange**
With the Allen Key which is readily to hand in the machine the printhead can be exchanged and adjusted easily.
- 14 Removing the print roller**
For cleaning or replacement the print roller can be easily removed.

All interfaces built in



- 1 RS232C interface.
- 2 USB 2.0 Slave interface.
- 3 Ethernet 10/100 Base T-interface with TCP/IP.
- 4 Slot for Wireless LAN-Wifi-card.
- 5 Two USB-Master-interfaces to connect an external operation panel, keyboard, scanner or Service Key.
- 6 Slot for memory card CompactFlash Type I.
- 7 Digital I/O-interface.
25-pin SUB-D socket
Each of the 24V in- and outputs are separated potential-free.

Input

Label feed
Repeat print run
Start printing
Pause
Label dispensed
Cancel re-set with memory
Cancel re-set without memory

Output

Warning if end of ribbon
Warning if end of label
Paper feed ON
Print start
Error end of ribbon
Error end of label
Print data available
Label in dispensing position
Error printer

Options



Centronics interface bi-directional acc. IEEE 1284.
Interface RS422/RS485 1.200 bis 230.400
Baud/8 Bit.

The interfaces are plugged onto the PC.
Connection to the printer via mini USB
connection cable.



Label selection box – I/O box.
Up to 16 different labels can be loaded via SPS
from a memory card. Operation of four in-/outputs
via Basic Interpreter.



cab WLAN card 802.11 b/g.

- 8 OEM – digital I/O-interface
15-pin SUB-D socket
Each of the 5V in- and outputs are separated potential-free

Input

Label feed
Repeat print run
Start printing
Cancel re-set without memory

Output

Warning if end of ribbon
Paper feed ON
Error end of ribbon
Error end of label
Print data available
Label in dispensing position
Error printer

Accessories the stand-alone operation



Memory card
CompactFlash Type I



Compact keyboard
Connection: USB
Number of keys: 86
L x B mm: 282 x 132
Cherry G84-4100



Standard keyboard
Connection: USB, Numb. of keys: 115
L x B mm: 460 x 192
Cherry G83-6105

The functions of the devices and conformity to CE-standards are only warranted by using the accessories made by cab or recommended by cab.

Stand-alone operation

Printing with a cab printer without PC.

The layout of the labels is created either with the label software or direct programming via text editor directly on the PC. Label formats, fonts and graphic data, serial data and data base contents are saved or imported on the CF memory card or the internal IFFS printer memory.

Only variable data is sent to the printer via keyboard or host computer before being printed out. Data of a barcode scanner or a scale can be additionally received by the printer.

1. Printhead		PX4			PX4.3 ²⁾		PX6	
Printing method		Thermal transfer / thermal direct						
Print resolution dpi		203	300	600	203	300	203	300
Print speed up to mm/s		250	250	100	200	150	200	200
Print width up to mm		104	105.6	105.6	104	108.4	168	162.6
2. Material								
Labels, continous rolls or fan-folded		paper, cardboard, textiles, synthetics like PET, PE, PP, PVC, PU, Acrylat, PI						
Material thickness / weight g/m²		0.055 - 0.35 / 60 - 160						
Label width ¹⁾ mm		10 - 116					50-174	
Width of carrier ¹⁾ mm		25 - 120					50-178	
Label height ¹⁾	min. mm without back-feed	6	6	6	6	6	12	12
	min. mm when dispensing ¹⁾	12	12	12	12	12	25	25
	max. mm	5000	4000	1000	5000	4000	6000	3000
3. Ribbon								
Ink		inside or outside						
Roll diameter up to mm		86						
Core diameter mm		25						
Ribbon length variable up to m		600						
Width ³⁾ up to mm		114						165
Ribbon saver		<input type="checkbox"/>						
6. Label sensor								
See-trough sensor		for label edge or punching mark and end of material						
Reflective sensor from the botton		for printing marks						
Distance to locating edge mm		4 - 60						
7. Electronics								
Processor high speed 32 Bit ColdFire/speed MHz		266						
RAM MB		64						
Memory IFFS MB Flash		8						
Slot for CompactFlash card Type I		■						
Slot for Cardbus / PC-Card Type II		■						
Real-time clock, printout of date and time		■						
8. Interfaces								
Centronics bi-directional acc. IEEE 1284		<input type="checkbox"/>						
RS 232 C 1.200 up to 230.400 Baud/8 Bit		■						
USB 2.0 High Speed Slave for PC connection		■						
Ethernet 10/100 Base T, LPD, RawIP-Printing, ftp-Printing, DHCP, HTTP, FTP, SMTP, SNMP, TIME, Zeroconf, mDNS, SOAP		■						
RS422, RS485 1.200 up to 230.400 Baud/8 Bit		<input type="checkbox"/>						
WLAN card 802.11b/g WEP/WPA PSK (TKIP)		<input type="checkbox"/>						
Wireless bridge 802.11b		<input type="checkbox"/>						
2 x USB Master for		external operation panel, keyboard, scanner, service key						
Digital I/O interface		■						
9. Operation data								
Power supply		100 - 240 V ~ 50/60 Hz, PFC						
Energy consumption		max. 250 W						
Operation temperature		5 - 40°C						
Humidity		30 - 85% not condensing						
Approvals		CE, FCC class A, CB, CCC, UL						
10. Operations panel								
Buttons/LED display		Pause, Feed, Cancel, Menu, Enter, 4 x Cursor						
LCD graphic display		Text 4 lines, ca. 20 characters per line						
Width x Height mm		60 x 40						

¹⁾ Depending on label size, material and adhesive limitations are possible. Critical material or applications have to be testet and cleared.

²⁾ Preferred for thermal transfer printing.

³⁾ The ribbon should approximate the width of the labels in order to avoid drapery.

11. Settings	
	Time, date, digital or analog clock
	25 language settings
	system settings, print parameters, interfaces, security
12. Monitoring	
Stop printing if	End of ribbon End of labels Printhead open
On the display	Data reception Clock WLAN field intensity Date sheet Ethernet state abc Debug Used memory Input buffer Temperature printhead Access to memory card Remaining quantity of ribbon
13. Test routines	
System diagnosis	When switched on with testing of printhead
Short status, status print	Font list, device list, WLAN state, profile of label, test grid, monitor mode, PPP state
Status reports	Extensive status print with information about setting, e.g. print length counter, runtime counter etc. Request of machine state via software command. Detailed status messages on the display, e.g. network error-no link, barcode error etc.
14. Fonts	
Font types	5 Bitmap fonts incl. OCR-A, OCR-B and 3 Vector fonts Swiss 721, Swiss 721 Bold and Monospace 821 available internally, loadable TrueType fonts. Optional Chinese (simplified Chinese) Optional Thai
Character sets	Windows 1250 up to 1257, DOS 437, 737, 775, 850, 852, 857, 862, 864, 866, 869, EBCDIC 500, ISO 8859-1 up to -10 and -13 up to -16, WinOEM 720, UTF-8, Macintosh Roman, DEC MCS, KOI8-R. All West and East European latin, cyrillic, greek, hebrew and arabic characters are supported. Optional Thai and Chinese
Bitmap-Fonts	Size of width and height 1 - 3 mm zoom 2-10. Orientation 0°, 90°, 180°, 270°
Vector-/TrueType fonts	Size of width and height 0.9 - 128 mm variable zoom, orientation 360° in steps of 1°
Font formats	Bold, italic, underlined, outline, negative, grey, vertical, depending on character fonts
Font width	Variable

15. Graphics		
Graphic elements	Line, arrow, box, circle, ellipse, filled and filled with fading	
Graphic formats	PCX, IMG, BMP, TIF, MAC, GIF, PNG	
16. Barcodes		
Linear Barcodes	Code 39, Code 93 Code 39 Full ASCII Code 128 A, B, C Codabar EAN 8, 13 EAN/UCC 128 EAN/UPC Appendix 2 EAN/UPC Appendix 5 FIM HIBC	Interleaved 2/5 Ident- and leader code of Deutsche Post AG JAN 8, 13 MSI Plessey Postnet RSS 14 UPC A, E, E0
2D-Codes	Aztec, Codablock F, Data Matrix, PDF 417, Micro PDF 417, UPS Maxicode, QR-Code, RSS 14 truncated, limited, stacked and stacked omnidirectional, EAN-Datamatrix, GS1 Data Bar	
All codes variable in height, module width and ratio. Orientation 0°, 90°, 180°, 270°. Optionally with check digit, printed characters and Start/Stop code depending on code type.		
17. Software		
Programming	J-Script direct programming	■
	abc-Basic Compiler	■
	Database Connector	□
System diagnosis/administration	Printer monitoring	■
	Network Manager	□
Label software	cablabel R2+	■
	Codesoft, Nicelabel, Easylabel	○ □
	Bartender, Label Matrix, Labelview	○
Windows driver certified	32/64 bit for Windows 2000 Windows XP Windows Vista Windows 7	Server 2003 Server 2008 Server 2008 R2 ■
Stand-alone operation		■

Standard ■
Option □
Authorized distribution by resellers. ○

The specifications are according to our current technical knowledge. They are subject to change.

Please recall current data from www.cab.de



External panel

It is connected via USB-interface. Both panels are comparably operative at the device.



Interface cover

Protects the interfaces from humidity and contamination.



Interface connector 25-pin SUB-D

with screw clamps for the cable connection.



Interface connector 15-pin SUB-D

with screw clamps for the cable connection.

The functions of the devices and conformity to CE-standards are only warranted by using the accessories made by cab or recommended by cab.

J	Job Start
H 100	Speed (100 mm/s)
O R	Orientation rotated by 180°
S l1;0,0,68,70,100	Size of label (100x68 mm, gap 2 mm)
T 10,10,0,5,pt20;sample	Text object/font: Swiss bold, 20 pt
B 10,20,0,EAN-13,SC2;401234512345	Barcode EAN 13, size SC 2
G 8,3.5,0;R:30,9,0,3,0,3	Graphic, box 30 x 9 mm,
A 1	Line strength 0.3 mm
	Number of labels (in this example 1)

Direct programming with J-Script

The printer language is easy to understand and integrate into your host system. Linkage of variable data with host application. Label design, graphics and fonts are recorded on the compact flash card. The host computer sends only the variable data to the printer.

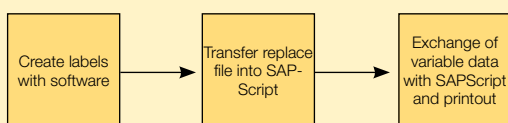
Integration into SAP R/3

In collaboration with SAP cab developed the so-called "Replace method" in order to control the cab printers with SAPScript from SAP/R3.

As a Silver Level-partner in SAP's Printer Vendor Program cab has access to the SAP development area for optimal printer support in a SAP environment.

SAP and R/3 are registered trademarks of SAP AG.

SAP® Printer Vendor Program



Upload-Method SAP R/3 note no. 137431

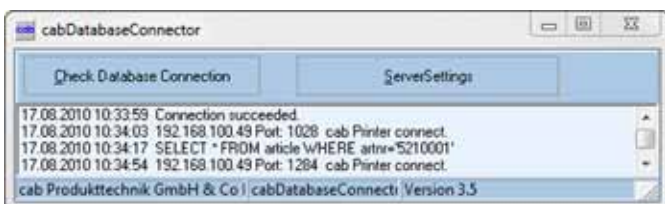
```

calypso.lib - Editor
Datei Bearbeiten Format Ansicht ?
<ABC>
label start
input a$
if left$(a$,15)="194300301480070" then
  print "R t2;";mid$(a$,16)
endif
if left$(a$,15)="194300300580172" then
  print "R t3;";mid$(a$,16)
endif
if left$(a$,15)="194300301970073" then
  print "R t1;";mid$(a$,16)
endif
if a$="Q0001" then
  print "A 1"
endif
goto start
  
```

abc - Basic Compiler

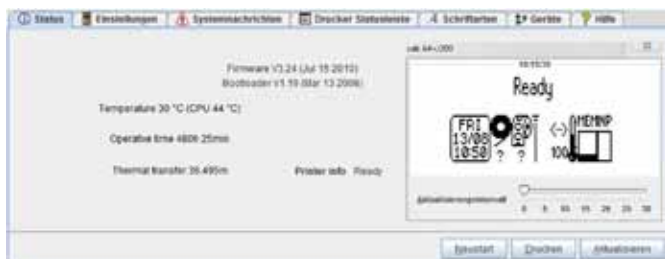
As an integrated element of the firmware it enables the printer to process data via BASIC programming before being transmitted to print editing. Thereby external printer languages can be replaced or data from other systems, e.g. SPS or a scale, can be transferred to be printed on different label sizes.

Example of use:
Connection to a scale



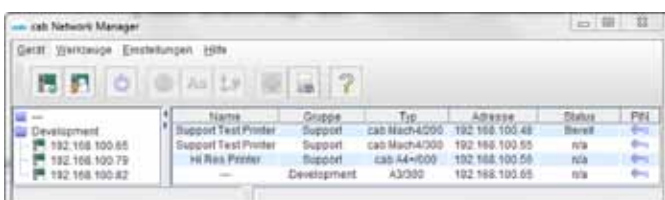
Database Connector

In the stand-alone mode with additional network connection the Database Connector enables stand-alone printers to link up data from a SQL-compatible database and to print. Data can be rewritten and modified simultaneously with the printing process.



Printer monitoring with Intra- and Internet

The integrated HTTP- and FTP-Server enables, with standard programs like web browser or FTP-clients, the print monitoring, configuration, the firmware-update and the administration of the memory card. Status signals, warning or error signals are sent to users or administrators either as email or SNMP-datagram via SNMP- and SMTP-clients. Synchronization of time and date with a time server.



Administration Network Manager

The cab Network Manager enables the user to control multiple printers across a network simultaneously. It supports monitoring, configuration, firmware updates, memory card, datasynchronization and PIN-administration centrally.



WHQL-accredited Windows printer driver for

Windows 2000	Windows Server 2003
Windows XP	Windows Server 2008
Windows Vista	Windows Server 2008 R2
Windows 7	

Our printer drivers are officially accredited and signed by Microsoft. They offer highest stability on your Windows operating system. The programs Word, Excel, Access, Corel Draw etc. permit the design and printing of labels.

Microsoft® is a registered trademark of Microsoft Corporation.



Label software

cablabel R2+

A powerful label software for free, specially designed for cab printers and print & apply systems.

The ideal design of a label is realizable by using different fonts, barcodes and graphics in variable heights, widths and printing directions.

The cab printers offer, besides the loadable MS Windows-available TrueType Fonts, a large number of internal bitmap and vector fonts. Due to the support of the most commonly used codepages country-specific special characters are also printable.

Highly productive functions permit the design and printing of complex labels within just a few minutes. cablabel R2+ supports special functions of the cab printers such as real-time clock, printer counter, stand-alone operation without PC, circular fonts or the display of the data stream into a data file. The MDI-technology permits the synchronous tensioning of several labels and the switching of different objects.




Cablabel R2+ is available in 24 different languages for the following operating systems:







Windows XP	Windows Server 2003*
Windows Vista	Windows Server 2008*
Windows 7	










*Terminalserver / Citrix are not supported.

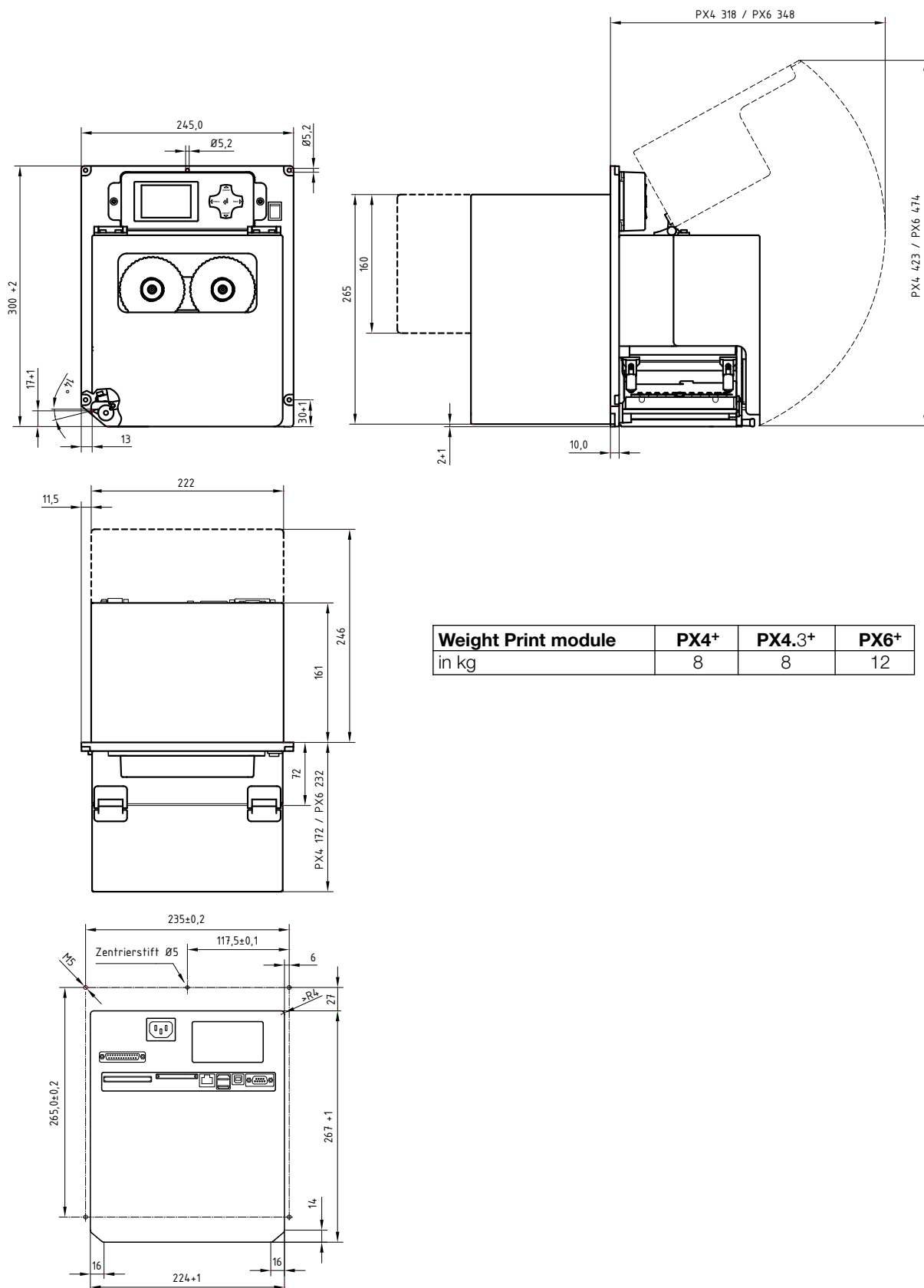
Additional label software...

...such as Codesoft, Nicelabel, Easylabel, Bartender, Label Matrix or Labelview support cab's transfer printers and print & apply systems. More information is available on our homepage.

	Part No.	Hardware	dpi	Part No.	Consumables		Part No.	Consumables	
	5956102.xxx	Print module PX4L/200		5956381.001	Printhead 4/203		5954180.001	Print roller DR4	
	5956103.xxx	Print module PX4L/300		5956382.001	Printhead 4/300				
	5956106.xxx	Print module PX4L/600		5956383.001	Printhead 4/600				
	5956112.xxx	Print module PX4R/200							
	5956113.xxx	Print module PX4R/300							
	5956116.xxx	Print module PX4R/600							
	5956142.xxx	Print module PX4.3L/200		5954085.001	Printhead 4.3/203				
	5956143.xxx	Print module PX4.3L/300		5956384.001	Printhead 4.3/300				
	5956152.xxx	Print module PX4.3R/200							
	5956153.xxx	Print module PX4.3R/300							
	5956235.xxx	Print module PX6L/200		5954217.001	Printhead 6/200		5954245.001	Print roller DR6	
	5956123.xxx	Print module PX6L/300		5956322.001	Printhead 6/300				
	5956236.xxx	Print module PX6R/200							
	5956133.xxx	Print module PX6R/300							
	.xxx	→			.201	.202	.203	.204	
		Digital I/O-Interface			x	x			
		OEM - Digital I/O-Interface					x	x	
		Ribbon saver				x		x	

Content of delivery:		
DVD:	Print module PX as Label printer, Power cable Type E+F, length 1,8 m, Connecting cables USB, length 1,8 m Operation manual de/en	
	Operation manual de/en/fr, Configurations manual de/en/fr, Service manual de/en, Spare part list de/en, Programming manual en, Windows printer driver 32/64 bit in 19 languages for Windows 2000 Server 2003 Windows XP Server 2008 Windows Vista Server 2008 R2 Windows 7 Label software cablabel R2+ in 24 languages Database Connector en	
Part No.	Accessoires	
	5954380	External operation panel
	5965040	Interface cover
	5917651	Interface connector 25-pin SUB-D with screw clamps for the cable connection
	5917652	Interface connector 15-pin SUB-D with screw clamps for the cable connection
	5561043	Memory card CompactFlash Type I
	5901630	Compact keyboard USB, Cherry G84-4100
	5901626	Standard keyboard USB, Cherry G83-6105

Part No.	Interfaces	
	5954200	Centronics Interface
	5954201	RS422/RS485 Interface
	5954191	Label selection box
	5561041	WLAN-card 802.11 b/g
Part No.	Connecting cable	
	5550818	Connecting cable RS232 C 9/9-pin, length 3 m
	5918008	Patch cable KAT 5e, 3 m grey
Part No.	Software	
	DL 40100	Database Connector, licence
	5580215	Administration Network Manager
	Content of delivery	Label software cablabel R2+
	on request	Codesoft, NiceLabel, Easylabel
	9008486	Programming manual english, printed copy



Weight Print module	PX4+	PX4.3+	PX6+
in kg	8	8	12

The cab delivery program

Label printer A⁺ series



Label printer XD4
for double sided printing



Label printer XC6
for two-tone printing



Label printer e4



Label printer MACH4



Labels / Ribbons



Label dispenser HS150



Print and Apply
Hermes⁺



Print module PX-series



Label software



Laser marking systems
FL-series



Laser safety housing



Central en Alemania

- Sucursales cab
- 350 distribuidores en más de 80 países.



Nuestro objetivo es la correcta evolución de sus procesos.

Presencia internacional de cab con representación en los principales centros industriales.

Bienvenido a nuestro sitio web: www.solge.es

Cerca del cliente en todo el mundo con numerosos centros de servicio y tiempos de reacción breves.



Alemania

cab Produkttechnik GmbH & Co KG
Postfach 1904
D-76007 Karlsruhe
Wilhelm-Schickard-Str. 14
D-76131 Karlsruhe
Teléfono +49 721 6626-0
Fax +49 721 6626-249
www.cab.de
info@cab.de

Francia

cab technologies s.a.r.l.
F-67350 Niedermodern
Teléfono +33 388 722 501
www.cab.de
info@cab-technologies.fr

España

Solge Systems, S.A.
E-08021 Barcelona
Teléfono +34 902 878 078
www.solge.es
ventas@solge.es

Estados Unidos

cab Technology Inc.
Tyngsboro MA, 01879
Teléfono +1 978 649 0293
www.cabtechn.com
info@cabtechn.com

Sudáfrica

cab Technology (Pty.) Ltd.
2125 Randburg
Teléfono +27 11-886-3580
www.cab.de
info@cabtech.co.za

Asien 亞洲分公司

希愛比科技股份有限公司
cab Technology Co., Ltd.
台灣台北縣中和市中正路 700 號 9F-8
Junghe 23552, Taipei, Taiwan
電話 Phone +886 2 8227 3966
網址 www.cabasia.net
詢問 cabasia@cab.de

China 中國

銳博(上海)貿易有限公司
cab (Shanghai) Trading Co., Ltd
上海市延安西路 2299 弄 11C60 室
電話 Phone +86 21 6236-3161
詢問 cabasia@cab.de

© Copyright cab/9008544

Otras delegaciones de cab bajo solicitud.

Esta documentación así como las traducciones de la misma son propiedad de cab Produkttechnik GmbH & Co KG. La reproducción, edición o copia total o parcial solo está permitida previo consentimiento por escrito por nuestra parte.